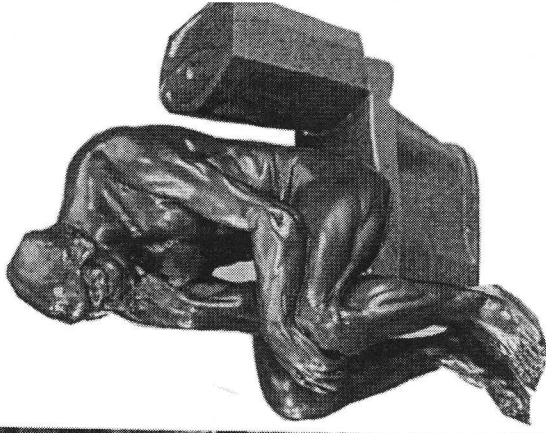
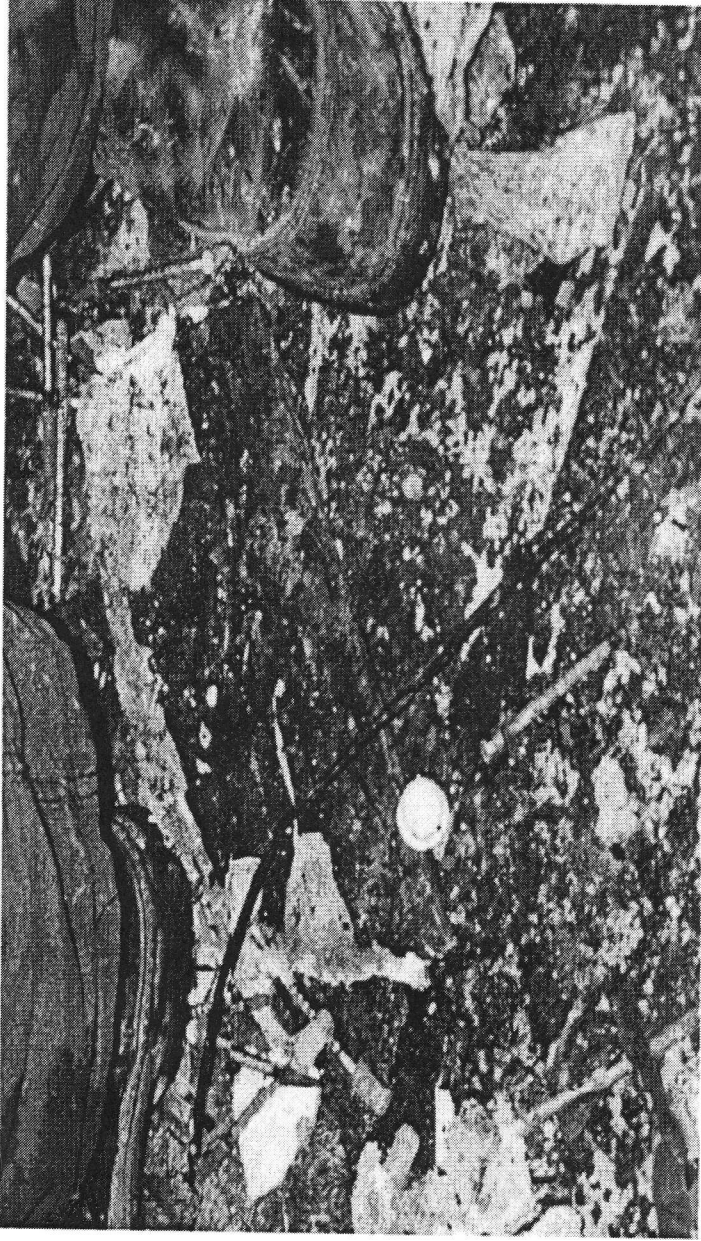


WORTH KNOWING WHILE YOU'RE GOING..



The above picture illustrates one of the many reasons to “sweep” the floor with the hose stream as you are advancing on the fire. **HYPODERMIC NEEDLES & GLASS** will easily penetrate your PPE. By “sweeping” with the hose stream you:

1. **REMOVE HAZARDS SUCH AS NEEDLES & GLASS**
2. **COOL THE OVERHEAD AND THE FLOOR**
3. **LISTEN FOR VARIATIONS IN THE STREAM INDICATING A HOLE IN THE FLOOR**

THIS PICTURE WAS TAKEN AT A HOUSE FIRE IN OCEAN CITY ... ASK SOME OF THE SENIOR GUYS ABOUT GLASS PENETRATING BUNKER PANTS AND LODGING IN A KNEE